

In collaboration with  
The National WWII Museum



Georgia Tech  
Alumni Association.

# EASY COMPANY: ENGLAND TO THE EAGLE'S NEST

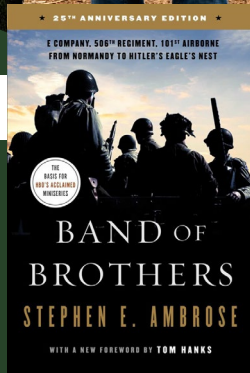
June 2 - 15, 2027 | 14 Days

Aldbourne • Portsmouth • Normandy • Eindhoven  
Arnhem • Bastogne • Clervaux • Luxembourg City  
Hagenau • Dachau • Berchtesgaden • Zell am See



## Book early and save!

Join our most popular tour, based on the best-selling book, **Band of Brothers** by Museum founder Stephen E. Ambrose, featuring original cast members from the award-winning HBO miniseries.



*Image: Expert battlefield guide Joris Nieuwint recounts the actions of Smokey Gordon near his foxhole dug in the Bois Jacques forest near Bastogne, Belgium, during the Battle of the Bulge. Band of Brothers actors Frank John Hughes, James Madio, and Ross McCall listen nearby.*

Dear Georgia Tech Alumni and Friends,

In 1980, Nick Mueller (President and CEO Emeritus of The National WWII Museum) persuaded his best friend and University of New Orleans colleague Stephen Ambrose to lead their first overseas tour – a trip from the Normandy D-Day beaches to the Rhine River. For the next 20 years, the duo continued to run tours while Ambrose began collecting hundreds of oral histories from D-Day veterans, including interviews with surviving members of the famed Easy Company.

Of course, the rest is history. Ambrose's research and interviews led to the best-selling book *Band of Brothers*, which would years later be adapted into the HBO miniseries that brought the story of Easy Company to millions of viewers worldwide. Perhaps no single work, in the past three decades, has had such an impact, or made such an imprint on the American memory of World War II.

Ambrose and Mueller's passion for preserving the stories of D-Day veterans led to the idea of building a National D-Day Museum in New Orleans. Their overseas tours tracing the wartime route of the "Band of Brothers" helped raise funds for the Museum, which would open in 2000 and quickly expand its mission to include the entire war effort.

Today, the Easy Company tour is the most popular educational travel program offered by The National WWII Museum. The exclusive itinerary features sites referenced in the Easy Company veteran interviews conducted by Ambrose and his team at the Eisenhower Center for American Studies. This journey remains core to the Museum's mission – offering rare access to sites, extraordinary guides, and quaint regional accommodations. As the authority on World War II, the Museum draws upon its collection of oral histories, photographs, and artifacts to deliver the most memorable, emotional, educational, and extraordinary travel experiences.

We hope you'll join us on this personal journey to the beaches, bridges, cities, and villages where the legendary Easy Company fought the crucial D-Day battles and changed the course of history. Every tour features an original cast member from the miniseries, making this tour a truly unique experience.

Sincerely,



Martin Ludwig  
Sr. Director of Travel  
Georgia Tech Alumni Association

190 North Avenue NW  
Atlanta, GA 30313  
Visit: [gtalumni.org/travel](http://gtalumni.org/travel)



Hear their stories.  
Learn their names.  
Stand where history  
was made.

**NOW ACCEPTING BOOKINGS**  
Let us help you plan your journey  
into history by contacting us at  
877-813-3329 X 257 or  
[travel@nationalww2museum.org](mailto:travel@nationalww2museum.org).



Two sisters pay respects at the grave of their uncle in Normandy American Cemetery. Photo by Susannah Fields.



*Band of Brothers* actor James Madio points at Frank Perconte's plaque on the Airborne Memorial Wall at the D-Day Experience Museum in Normandy. Courtesy Susannah Fields.



Tour guests at Schoonderlogt Estate in the Netherlands, posing in front of the gate where Major Richard "Dick" Winters took a famous photo.



# The Itinerary

## DAY 1 • ARRIVE IN LONDON / TRANSFER TO ALDBOURNE, ENGLAND

Arrive in London Heathrow Airport (LHR) / Transfer to Aldbourne / Explore the training areas of Easy Company / Aldbourne walking tour accompanied by local villagers  
*Accommodations: Donnington Valley Hotel & Spa (L, R, D)*

## DAY 2 • PORTSMOUTH / NORMANDY

Golden Lion Pub / Cross the English Channel by Ferry / Arrive Normandy  
*Accommodations: La Ferme de la Rançonnière (B, L, D)*

## DAY 3 • NORMANDY, FRANCE

La Fièvre / Sainte-Mère-Église / The Airborne Museum / Brécourt Manor / Sainte-Marie-du-Mont / Utah Beach / Utah Beach Museum  
*Accommodations: La Ferme de la Rançonnière (B, D)*

## DAY 4 • NORMANDY, FRANCE

Beuzeville-au-Plain / Carentan / Dead Man's Corner Museum / The church at Angoville-au-Plain / Free time in Bayeux  
*Accommodations: La Ferme de la Rançonnière (B, L)*

## DAY 5 • NORMANDY, FRANCE

Pointe du Hoc / Omaha Beach / Normandy American Cemetery and Memorial / Special "Farewell to Normandy" dinner  
*Accommodations: La Ferme de la Rançonnière (B, L, D)*

## DAY 6 • TRANSFER TO THE NETHERLANDS

Travel by coach to the Netherlands / Free time in Amiens, France / Group dinner in Eindhoven  
*Accommodations: Hotel Pullman Eindhoven Cocagne (B, D)*

## DAY 7 • EINDHOVEN / ARNHEM / NIJMEGEN

Tour American areas of Operation Market Garden / Tour of Arnhem and "The Bridge Too Far"  
*Accommodations: Hotel Pullman Eindhoven Cocagne (B, L)*

## DAY 8 • THE ARDENNES

Optional walking tour of Eindhoven or morning at leisure / Netherlands American Cemetery / Travel to Clervaux, Luxembourg  
*Accommodations: Chateau d'Urspelt (B, D)*

## DAY 9 • BASTOGNE

Mardasson Memorial / Tour Easy Company's foxholes in the Bois Jacques / 101st Airborne Museum / Bastogne War Museum  
*Accommodations: Chateau d'Urspelt (B)*

## DAY 10 • LUXEMBOURG CITY / HAGUENAU

Luxembourg American Cemetery and Memorial / Haguenau / Overnight in Stuttgart  
*Accommodations: Maritim Hotel Stuttgart (B, L)*

## DAY 11 • DACHAU / ZELL AM SEE

Dachau Concentration Camp / Transfer to the Bavarian Alps  
*Accommodations: Grand Hotel Zell am See (B, D)*

## DAY 12 • BERCHTESGADEN

Obersalzberg driving tour / Former Berghof site / Lunch on your own in Berchtesgaden / Guided tour of underground bunkers and documentation center  
*Accommodations: Grand Hotel Zell am See (B)*

## DAY 13 • BERCHTESGADEN

Tour Hitler's Eagle's Nest / Afternoon free in Zell am See  
*Accommodations: Grand Hotel Zell am See (B, L, D)*

## DAY 14 • FLIGHTS HOME FROM MUNICH

Transfer to the Munich International Airport (MUC) for your independently scheduled flights home (B)



## EXTEND YOUR JOURNEY!

### Optional Three-Night Pre-Tour Extension Program **CHURCHILL'S LONDON**

\$2,828 per person double occupancy, \$3,428 single occupancy



Churchill War Rooms



Aerial view of Chartwell, home of Sir Winston Churchill

## Tour Highlights

Three nights at the historic Rubens at the Palace Hotel in the heart of London

Explore Chartwell, Sir Winston Churchill's countryside manor

Experience the continuing influence of war on the world at Imperial War Museum-London

Discover the Churchill War Rooms constructed beneath the street of Westminster during World War II

## Book early and save!

Book early and save up to \$1,000 per couple.

Contact us at 877-813-3329 X 257 or [travel@nationalww2museum.org](mailto:travel@nationalww2museum.org).

# EASY COMPANY: ENGLAND TO THE EAGLE'S NEST

June 2 - 15, 2027 | 14 Days

\$11,599 \$11,099\* per person double occupancy,

\$12,599 \$12,099\* single occupancy

\*Taxes and fees are an additional \$399 per person.

## Tour Inclusions

Travel in the company of a cast member from the HBO miniseries **Band of Brothers** (Actor will be announced to travelers prior to departure)

Full-time logistical Tour Manager

Expert local battlefield guides

Roundtrip Airport Transfers (when arriving & departing on scheduled group tour dates)

Boutique hotel accommodations in prime locations

Private, first-class, air-conditioned motor coach transportation

VIP access to sites not offered on other tours

Entrance fees to all sites, museums, and historic attractions in itinerary

Video oral history presentations from the Museum's collection

Gratuities to guides, drivers, porters, and servers

Personal listening devices on all included touring

13 Breakfasts, 6 Lunches, 1 Reception, and 8 Dinners

Beer, wine, and soft drinks with included lunches and dinners

Informative map book including useful battlefield maps and archival images to be used throughout your journey

Personalized luggage tags and customized name badge

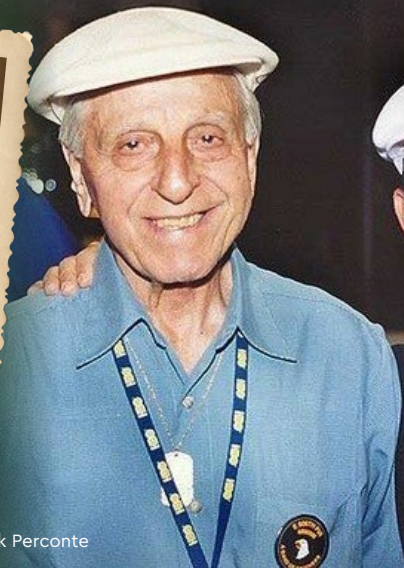
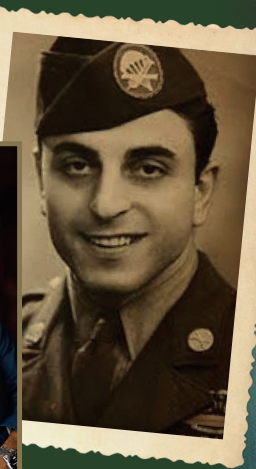
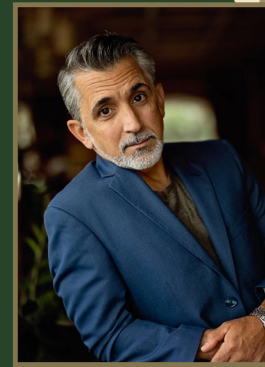
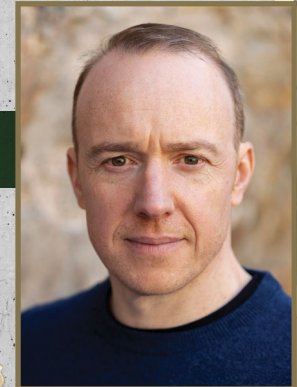


Photo: *Band of Brothers* actor James Madio with Sgt. Frank Perconte

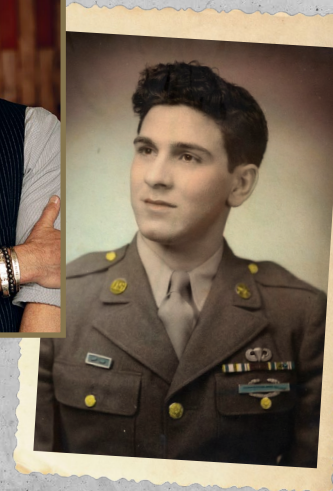
# BAND OF BROTHERS

## Featured Actors

Robin Laing | Pvt. Edward 'Babe' Heffron



Frank John Hughes  
SSG William J. "Wild Bill" Guarnere, Sr.



Shane Taylor | Eugene G. "Doc" Roe Sr.

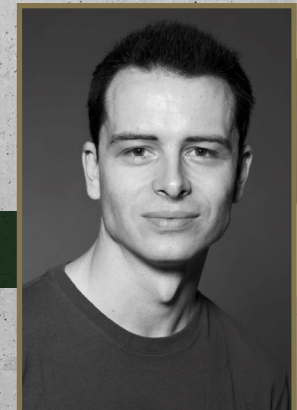


Photo: The town of Aldbourne, England, training village of Easy Company



Engage. Reflect. Explore.  
Scan the QR code to book online!